



For more information, please contact:

BTS Holdings plc
BTS House
69-73 Manor Road
Wallington
Surrey
SM6 0DD

tel: +44 (0)20 8401 9000
fax: +44 (0)20 8401 9100
email: info@bts.co.uk
web: www.bts.co.uk

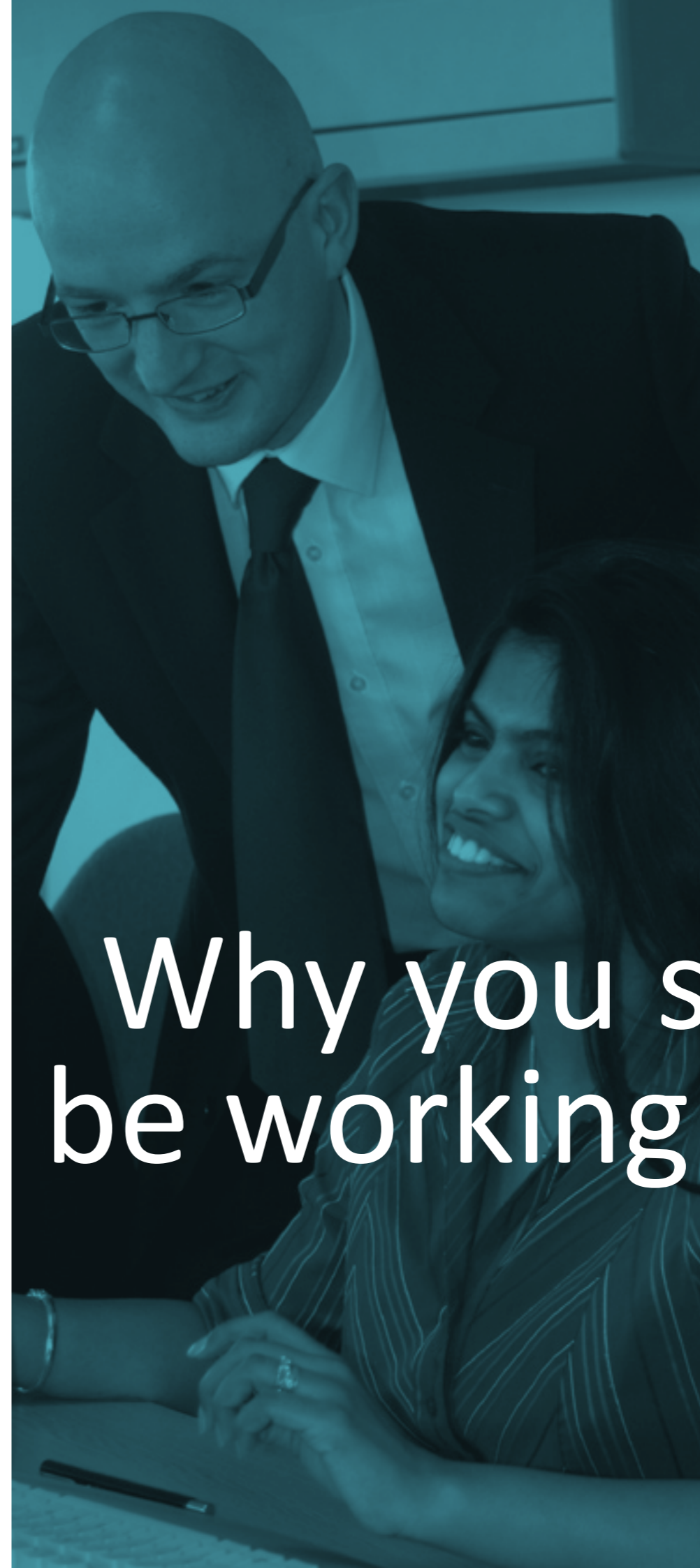


technology simplified

BTS works with a number of business partners, including:



Why you should be working for us



Our Business

BTS is a privately owned software and services company that specialises in applications that help its customers improve their electronic communications and achieve significant cost savings.

Using the most advanced technology, BTS develops, installs and supports IT systems for hundreds of blue-chip companies and public sector organisations, both throughout the UK and, increasingly, worldwide.

Working with partners such as BT, Cisco, HP and Microsoft, BTS serves a wide range of industry sectors including banking & finance, education, emergency services, health, local & central government, and retail.

BTS was established in 1980 and has always been a market leader, pioneering the first use of web technologies and business intelligence tools and continuing to invest more in research and development than anyone else in its market sector.

We believe we are better at helping customers achieve their objectives because we take the trouble to understand their business. We take pride in always doing everything in our power to deliver on our promises.

Our Family

We currently employ 50 talented individuals, mostly working at our offices in Surrey, the majority of whom are computing graduates. Many of our staff have been with us since the early days of the company. Indeed, the average length of service is currently over 11 years.

We believe that one of the reasons why our staff stay with us so long is because of the way they are treated. We recognise that our staff are our greatest asset and we place a strong emphasis on training, developing them to their full potential and rewarding them with attractive career progression.

BTS never recruits externally for senior positions, preferring instead to develop and promote staff from within. Over half of our Directors and the majority of our senior staff originally came to us via our university recruitment programme.

Advantages of working for an SME

Many students associate graduate careers with working for blue-chip companies or big public sector organisations. There is an assumption that graduate-level roles and serious opportunities for progression are only available in such organisations.

However it is a common misconception that the majority of graduate jobs are within large multi-nationals. In reality, only 15% of graduates start their careers on structured training schemes with large companies.

The Department for Business Innovation and Skills (BIS) defines an SME as a business with less than 250 employees.

Small to medium-sized enterprises (SMEs) represent the fastest growing sector of the economy and students are often unaware of the considerable advantages of working in an SME.

Recently BIS estimated that 99.9% of the 4.3 million businesses in the UK were SMEs and that these businesses accounted for 58% of all UK employment and 51% of the UK's business turnover.

SMEs like BTS who have recruited graduates have found great benefits in terms of new ways of looking at problems, enthusiasm, and new skills brought to the company.

Working for an SME can be totally different from working for a larger, blue-chip organisation:

- Breadth of experience: More likely to get involved in a wider range of activities and take on extra responsibilities.
- Flexibility: Many SMEs offer attractive benefits and family-friendly policies (working from home, job-share, flexible hours etc)
- Involvement: More opportunities to have ideas and personal opinions listened to.
- Career Progression: More control over careers and job titles; ability to develop new roles.
- Early Responsibility: Many graduates are given autonomy from an early stage.
- Identity & Recognition: Better chance of being "seen", rather than being just one of several hundred employees.
- Fast Turn-Around: Time between generating an idea and seeing the end result is much shorter.
- Speed of Progression: Fewer levels to work through, so promotion can come quickly.
- Camaraderie: Working as part of a small team can be extremely rewarding, both personally and professionally.

Working for an SME need not be thought of as purely a stop-gap option, but somewhere to build a serious and fulfilling career. A recent Sunday Times survey found that half of all SME employees believe they have found their perfect job.

